

8 7 6 5 4 3 2 1

F

E

D

C

B

A

F

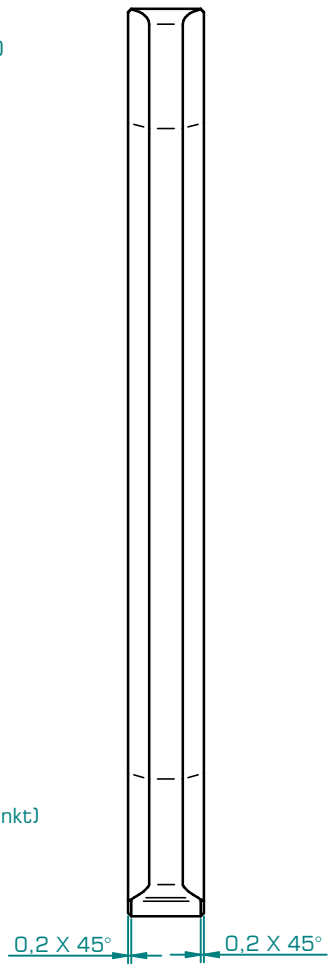
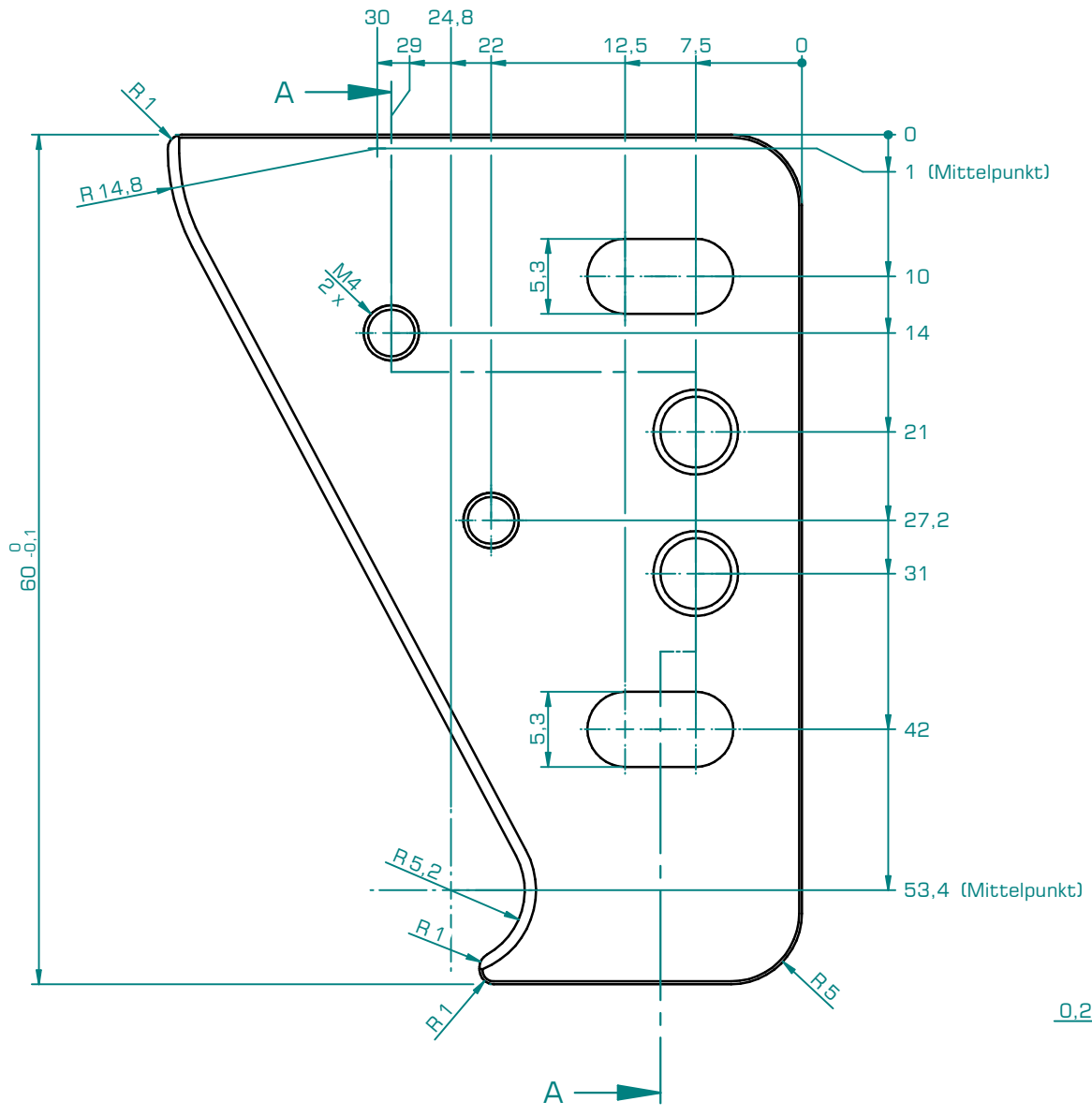
E

D

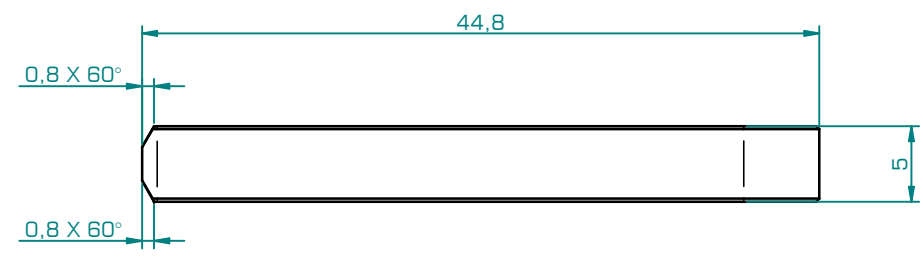
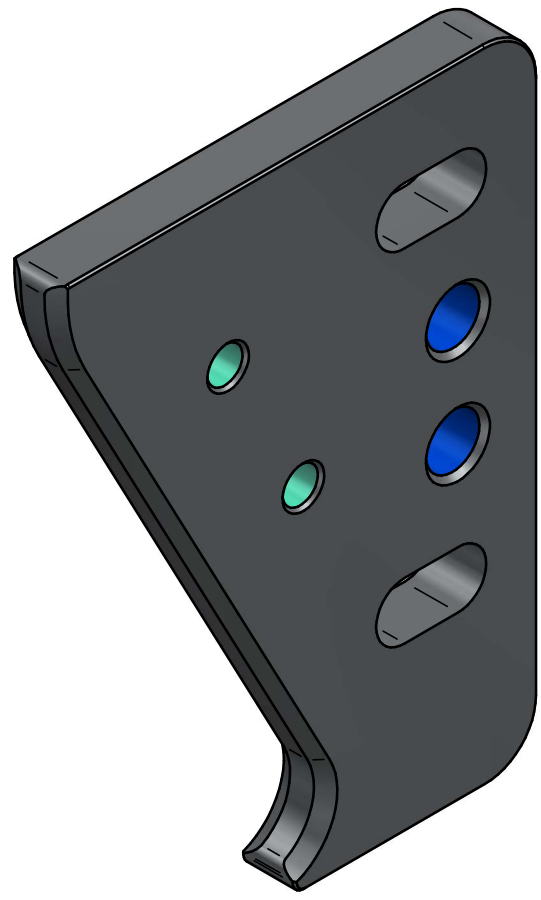
C

B

A



Section A-A



√Ra 0,8

Rev. 00 -					17.09.2020	UNMA
projection method 1 ISO 10209-2	undimensioned edges ISO 13715	fundamental tolerancing principle ISO 8015	pre-cut: -	weight: 0,068 kg	surface area: 48,15 cm ²	size: A3
			sheet thickness: -	material: 1.4305 / X8CrNiS18-9		scale
			bending data	surface treatment: -		2:1
				color: -		
general tolerances: DIN ISO 2768 - fH			design	date	name	title
all dimensions are in millimeters			detail	15.09.2020	UNMA	Zentrierung
remark: -			check	17.09.2020	UNMA	centering
legally binding protection notice according ISO 16016			project	53		
Copying this document, and giving it to others and the use or communication of the contents thereof, are forbidden without express authority. Offenders are liable to the payment of damages. All rights are reserved in the event of the grant of a patent or registration of a utility model or design.			innomotec			draft number
			Maschinenbau - Anlagentechnik - Anlagenbau			00001699
			www.innomotec.at			status-draft: 0
						status-model: 0
						file: 00001699#00.dft
						sheet 1 of 1

8 7 6 5 4 3 2 1