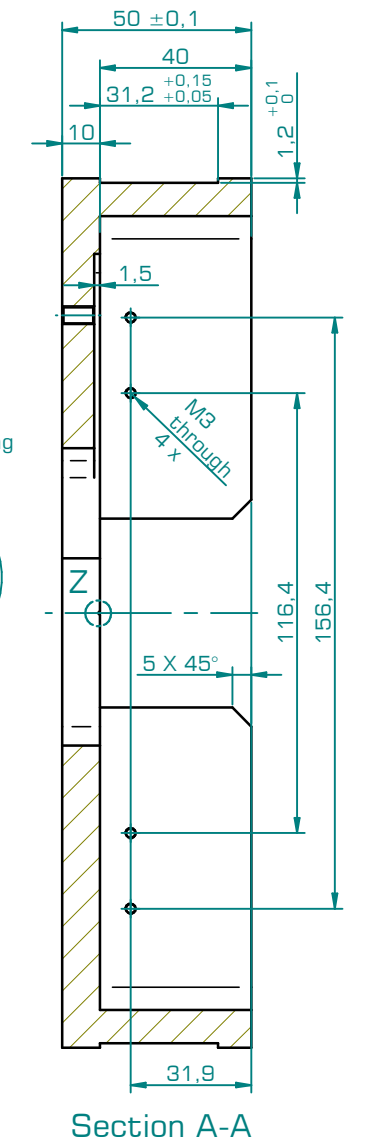
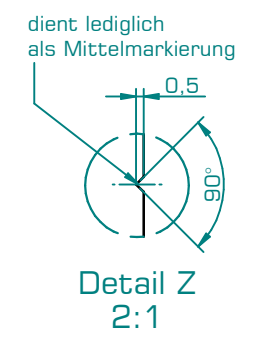
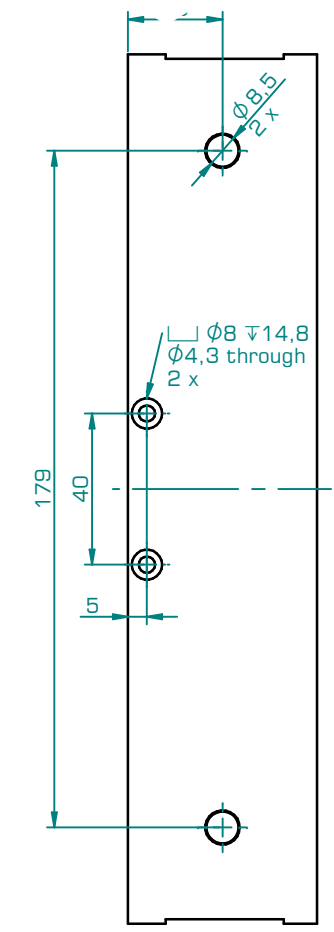
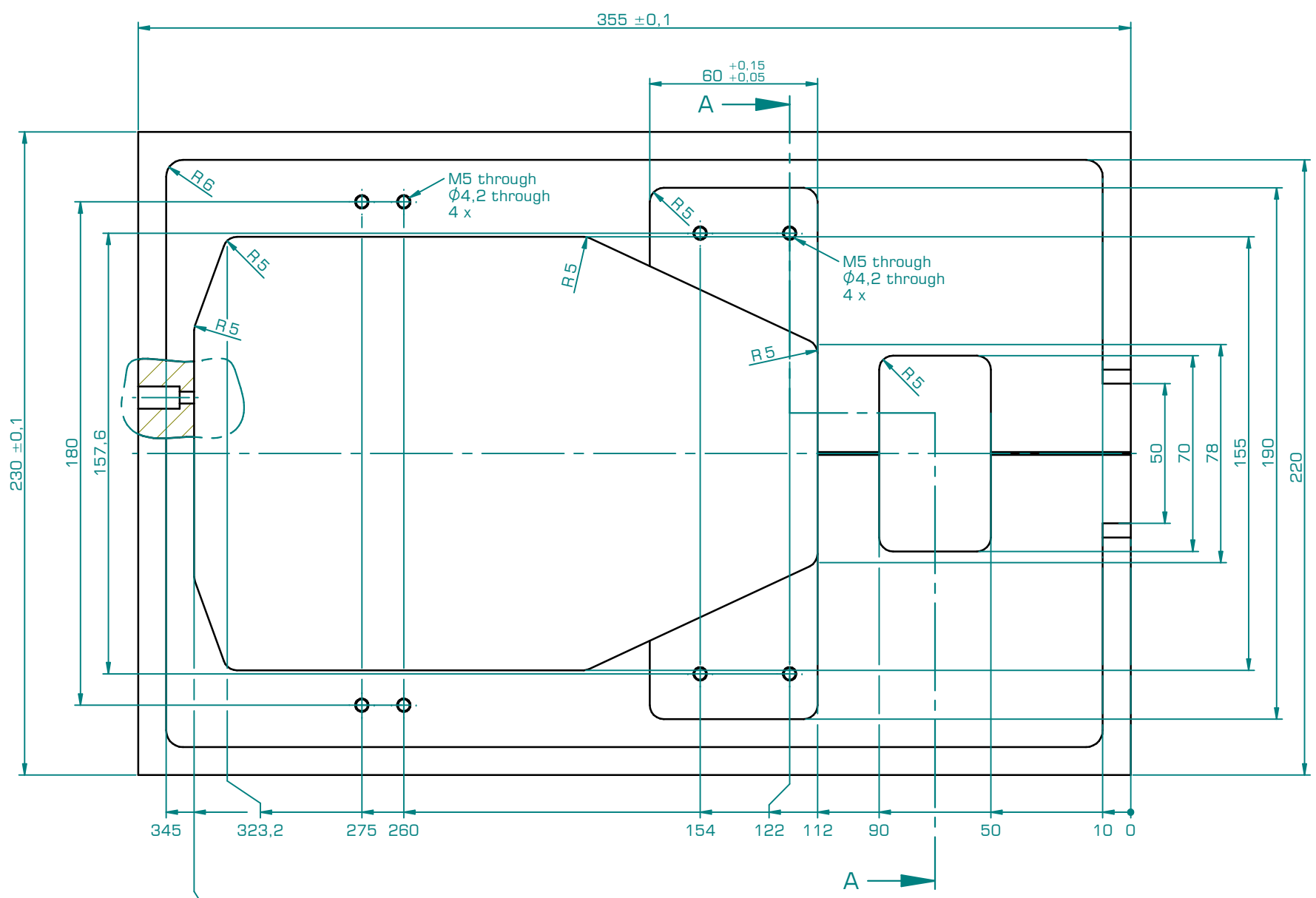
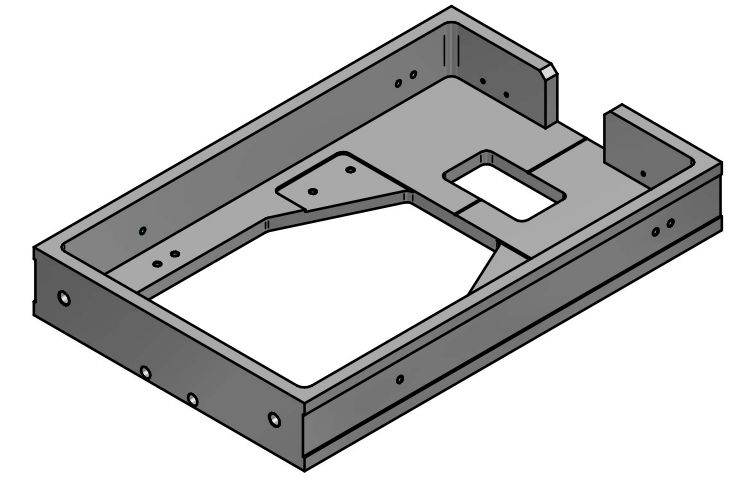
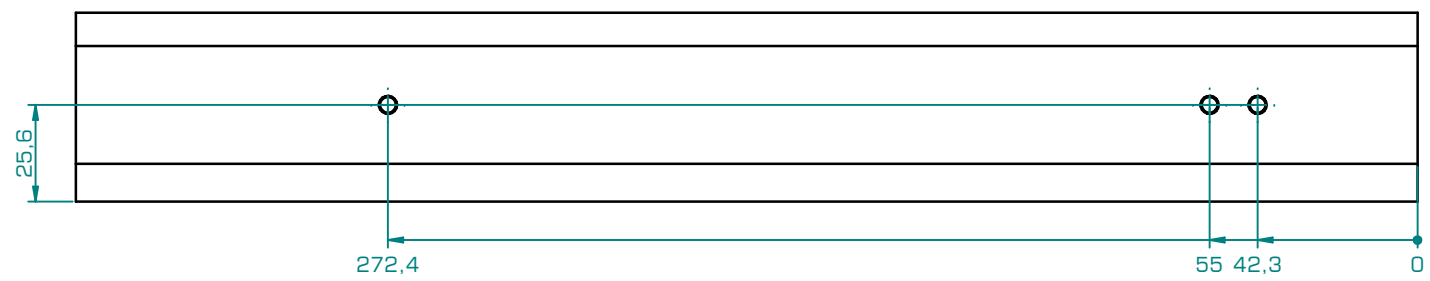
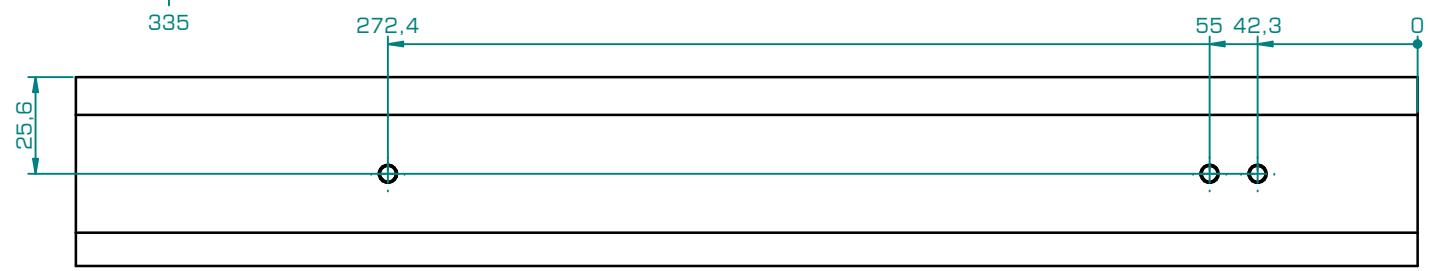


8 7 6 5 4 3 2 1

F
E
D
C
B
A



√ Ra 1,6



| | | | | | | |
|---|---|---|---|---|---------------------------------------|------------------------|
| Rev. 00 - | | | | | 17.09.2020 | UNMA |
| projection method 1 ISO 10209-2 | undimensioned edges ISO 13715 | fundamental tolerancing principle ISO 8015 | pre-cut: - sheet thickness: - bending data | weight: 2,322 kg material: 3.3547 / EN-AW 5083 surface treatment: eloxiert / anodized color: natur | surface area: 2074,10 cm ² | size: A3 scale: 1:2 |
| general tolerances: DIN ISO 2768 - fH | all dimensions are in millimeters | remark: - | design: 31.08.2020 detail: 17.09.2020 check | date: 31.08.2020 name: GWMA UNMA | title: Schublade drawer | |
| legally binding protection notice according ISO 16016 | Copying this document, and giving it to others and the use or communication of the contents thereof, are forbidden without express authority. Offenders are liable to the payment of damages. All rights are reserved in the event of the grant of a patent or registration of a utility model or design. | | project: 53 | draft number: 00001586 | status-draft: 0 | sheet 1 of 1 |
| | | | www.innomotec.at | file: 00001586#00.dft | status-model: 0 | |

8 7 6 5 4 3 2 1